

corecon

COLOR CONTACT LENS
made by KOREA

**2019
DESIGN**



New Arrival

New Arrival

Water content : 38%

Base curve 8.6mm

Diameter 13.00 ~ 15.00mm

Center Thickness 0.10mm (-3.00D)

Power 0.00~-6.00(0.25step)
-6.00~-10.00(0.50step)

Water content 38%

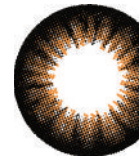
Material Polymacon

EXP. 5 years

V01-25 BK(1tone)



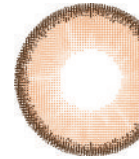
V02-71 BR(2tone)



V02-71 GY(2tone)



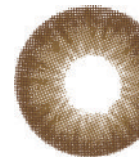
V02-72(2tone)



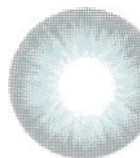
V02-73 HZ(2tone)



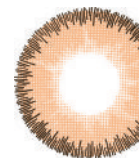
V02-74 BR(2tone)



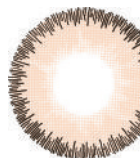
V02-74 GY(2tone)



V02-75 BR(2tone)



V02-75 GY(2tone)



V03-79 GN(3tone)



V03-79 GY(3tone)



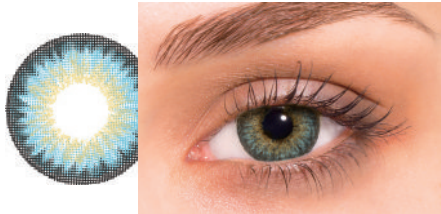
V03-79 HZ(3tone)



New Arrival

Water content : 38%	
Base curve	8.6mm
Diameter	13.00 ~ 15.00mm
Center Thickness	0.10mm (-3.00D)
Power	0.00~-6.00(0.25step) -6.00~-10.00(0.50step)
Water content	38%
Meterial	Polymacon
EXP.	5 years

V03-80(3tone)



V03-81(3tone)



V03-82 GY(3tone)



V03-82 HZ(3tone)





luminature

luminous x nature

Luminature, a combination of the words luminous and nature is claiming to natural design. Adopting dot matrix with iris internal object motif an effects natural and popular design. Also, it can express harmonious eyes at natural light and indoor lighting.

luminature

Water content : 38%

Base curve 8.6mm

Diameter 13.00 ~ 15.00mm

Center Thickness 0.10mm (-3.00D)

Power 0.00~-6.00(0.25step)
-6.00~-10.00(0.50step)

Water content 38%

Material Polymacon

EXP. 5 years

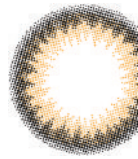
V2058_BROWN(2tone)



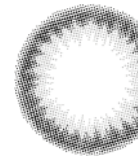
V2101_GRAY(2tone)



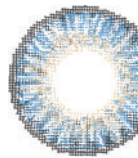
V2076_BROWN(2tone)



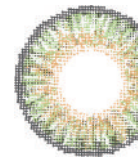
V2076_GRAY(2tone)



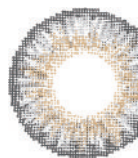
V3039_BLUE(3tone)



V3039_GREENN(3tone)



V3039_GRAY(3tone)



V3039_HAZEL(3tone)



V3049_BROWN(3tone)



V3049_GRAY(3tone)



V02-6_CHOCO(2tone)



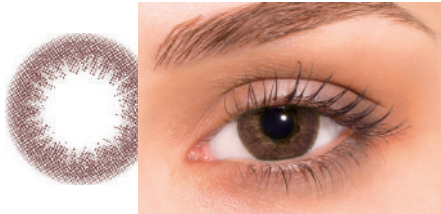
V02-24_GRAY(2tone)



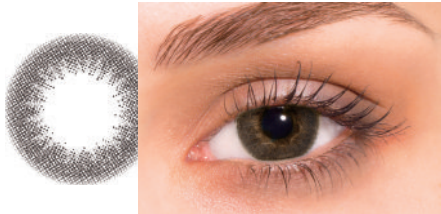
luminature

Water content : 38%	
Base curve	8.6mm
Diameter	13.00 ~ 15.00mm
Center Thickness	0.10mm (-3.00D)
Power	0.00~-6.00(0.25step) -6.00~-10.00(0.50step)
Water content	38%
Meterial	Polymacon
EXP.	5 years

V02-18_BROWN(2tone)



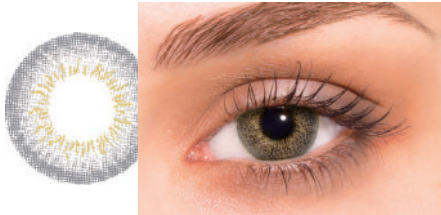
V02-18_GRAY(2tone)



V03-13_BROWN(3tone)



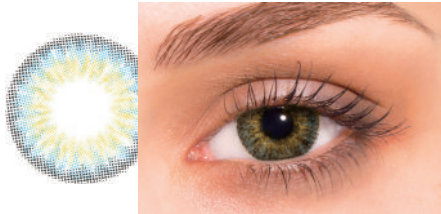
V03-13_GRAY(3tone)



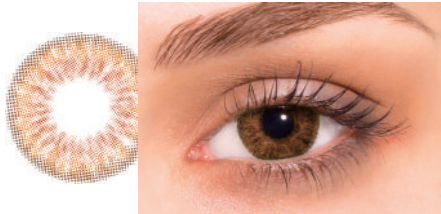
V03-15_BROWN(3tone)



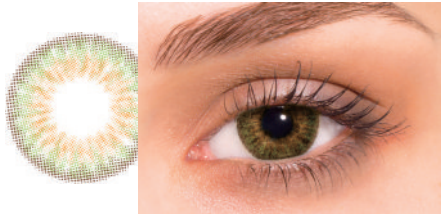
V03-19_BLUE(3tone)



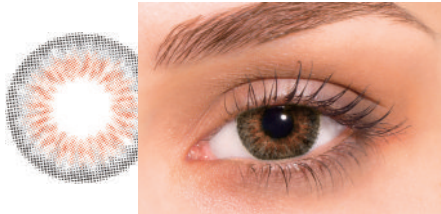
V03-19_BROWN(3tone)



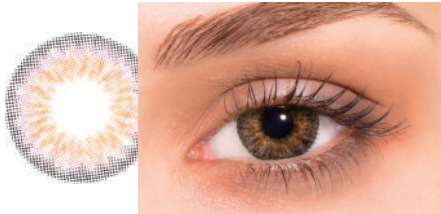
V03-19_GREEN(3tone)



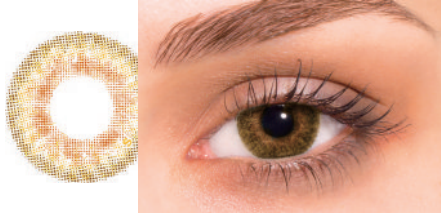
V03-19_GRAY(3tone)



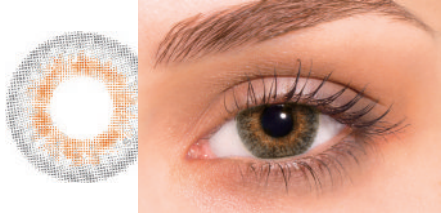
V03-19_VIOLET(3tone)



V03-33_BROWN(3tone)



V03-33_GRAY(3tone)





glamlux

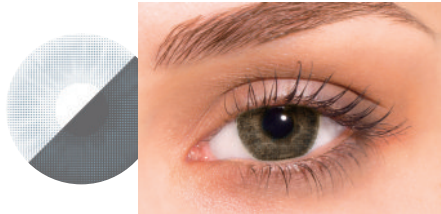
glamorous x luxury

Glamlux, a combination of the words glamorous and luxury is claiming to luxury and chic design. It is adopting dot matrix structure with covering inside of iris as high color development. So, when you wear the lenses, you can make glamorous and brilliant eyes.

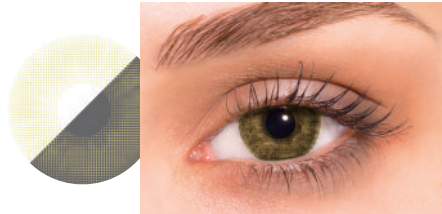
glamlux

Water content : 38%	
Base curve	8.6mm
Diameter	13.00 ~ 15.00mm
Center Thickness	0.10mm (-3.00D)
Power	0.00~-6.00(0.25step) -6.00~-10.00(0.50step)
Water content	38%
Meterial	Polymacon
EXP.	5 years

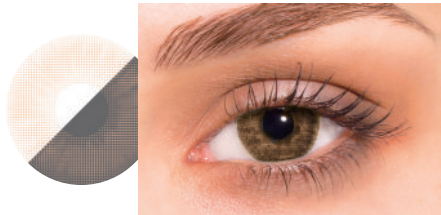
V01-51(1tone)



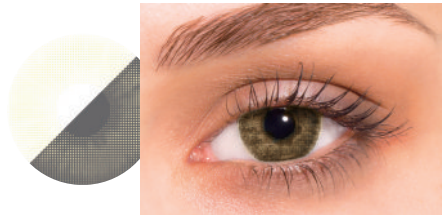
V01-52(1tone)



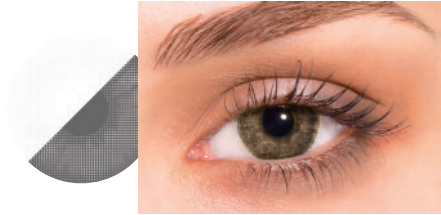
V01-53(1tone)



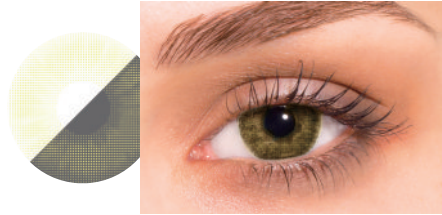
V01-54(1tone)



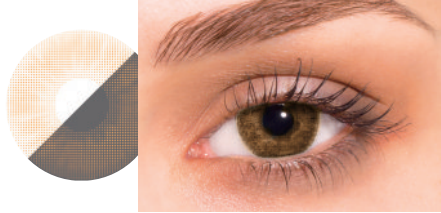
V01-55(1tone)



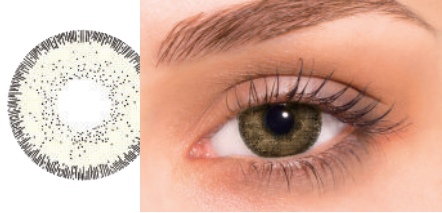
V01-56(1tone)



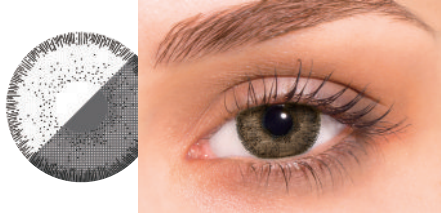
V01-57(1tone)



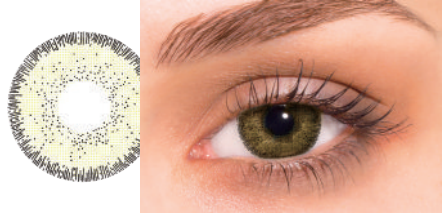
V02-101(2tone)



V02-102(2tone)



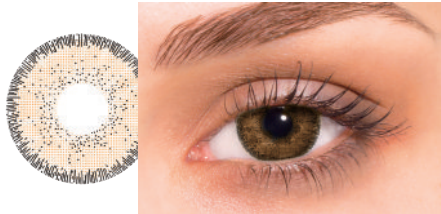
V02-103(2tone)



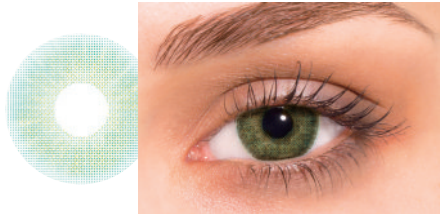
glamlux

Water content : 38%	
Base curve	8.6mm
Diameter	13.00 ~ 15.00mm
Center Thickness	0.10mm (-3.00D)
Power	0.00~-6.00(0.25step) -6.00~-10.00(0.50step)
Water content	38%
Meterial	Polymacon
EXP.	5 years

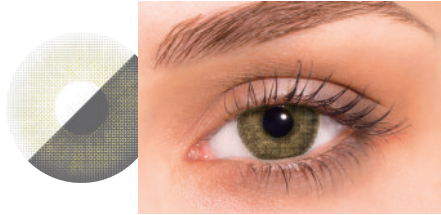
V02-104(2tone)



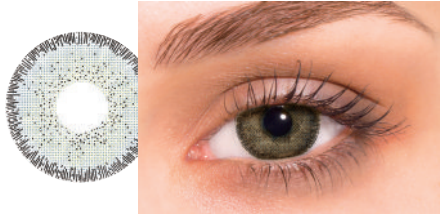
V02-111(2tone)



V02-112(2tone)



V03-241(3tone)





CORECON INC.

CORECON INC. was established in 2017. We are exporting color contact lens and glasses frame in Middle East and Europe countries such as Oman, UAE, Saudi Arabia, United Kingdom and etc.

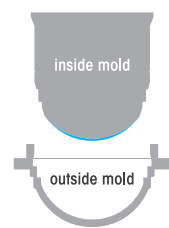
Our products are manufacturing at our partner factory in Korea. In case of color contact lens, we have over 3,000 kinds of design and we can provide as private label. Also, we are always ready to help everything if you want.

We are trying to provide reasonable price and high quality products.

In addition, we are preparing to manufacture the contact lens by ourselves from next year. It would be helpful for your business with us.

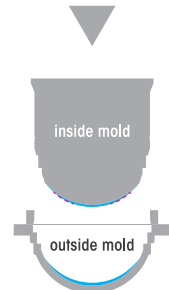
Are you ready to be a partner with CORECON??

production process



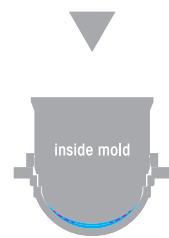
polymer coating

HEMA polymer coated on the inside mold.



pattern print

Coloring pigment on the coating side and injected Polymacon in the outside mold.



inject HEMA

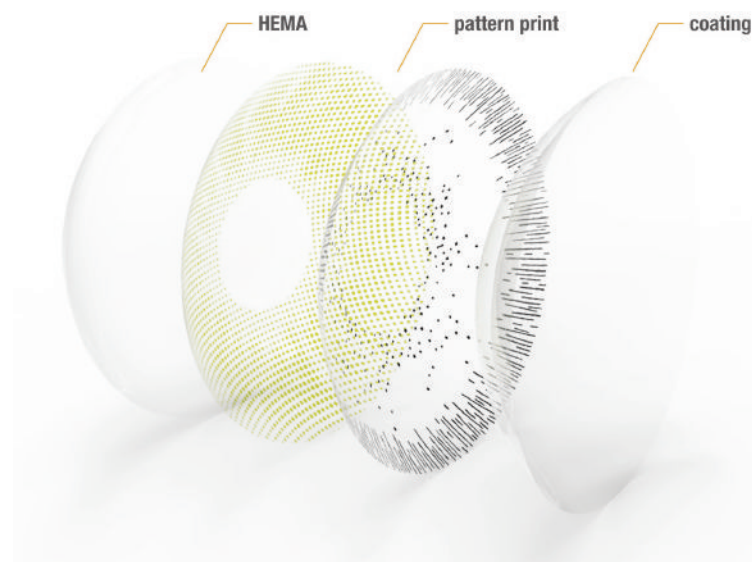
Proceeded thermal polymerization after combining both outside and inside mold. It will help to protect the pigment from being exposed to the outside.

eye protection

Protect color layer structure

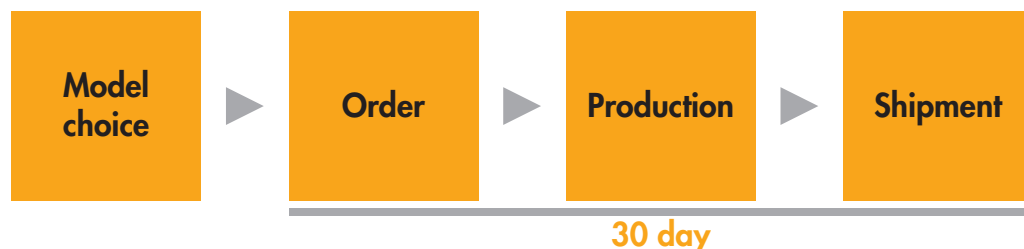
The eyes are one of the most important parts of our body and the only organ that is exposed to the outside. Therefore, the pigment of color lens shouldn't touch both cornea and eyelid.

We produce our products as HEMA polymer coating process so, the pigment is including inside lens and help to protect the pigment from being exposed to the outside.



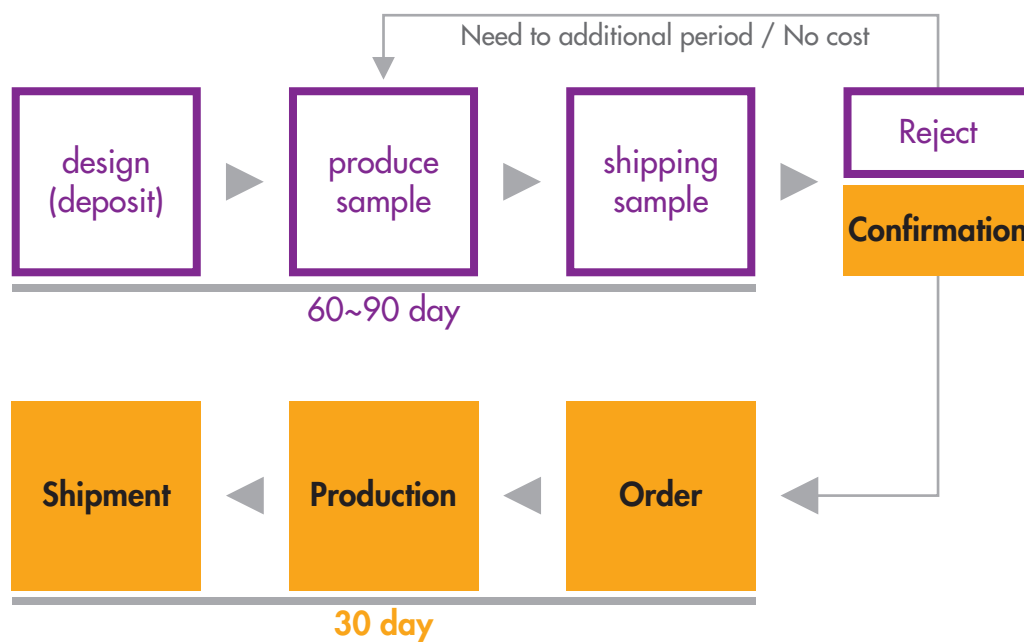
order process for **ODM**

First, client choose our model and check the real sample. Then, client send the purchase order to us and the production period is 30 days. During the production, we should discuss and produce for package and lid design. Our package and lid produce at quality control environment for 0% defect.



order process for **OEM**

In case of OEM, we need to time and cost for development. It will take 60~90 days from design copy to shipment and client can adjust the design until the confirmation. When we make a sample, we should charge the deposit for design, mold and sample but if client place an order over MOQ, it will be deducted from total amount.



© 2010 Pearson Education, Inc. or its affiliate(s). All rights reserved.

